

# Your Partner In Lift Solutions.

Finishes Catalogue.



# Finishes Catalogue



► **Finishes**

1. **Car models**
2. **Panoramic cars**
3. **Car finishes**
4. **Doors**
5. **Operating panels and Indicators**
6. **Structures**





1.

# Car models



101

**Walls**

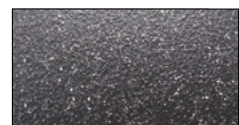
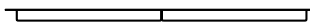
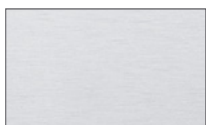
**Joint**

**Floor**

Satin Stainless Steel

No joint between slats

Anti-slip rubber Black

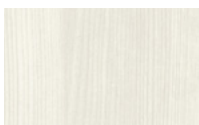




# L02

## Walls

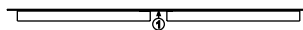
F8841 White Ash



Laminate

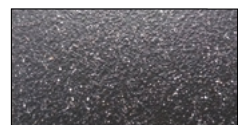
## Joint

Straight joint between slats



## Floor

Anti-slip rubber Black



\*M02 also available in Melamine



# L03

## Walls

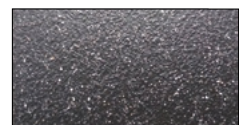
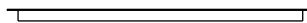
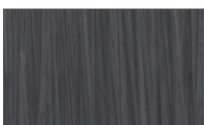
## Joint

## Floor

F6307 Burnt Strand

Smooth panel

Anti-slip rubber Black



Laminate

\*M03 also available in Melamine



# L04

## Walls

F1139 Cerezo



Laminate

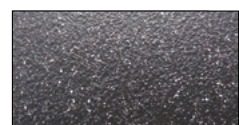
## Joint

No joint between panels



## Floor

Anti-slip rubber Black



\*M04 also available in Melamine



# S01

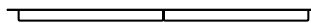
## Walls

White Skinplate



## Joint

No joint between slats



## Floor

Anti-slip rubber Black







# CH01

## Walls

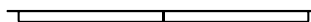
Beige RAL 1019



Painted Sheet

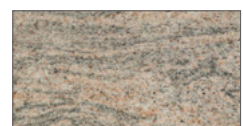
## Joint

No joint between slats



## Floor

Sahara Winds





## Quartz

### Walls

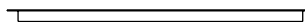
White RAL 9003



Back painted glass

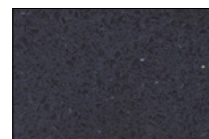
### Joint

Smooth panel



### Floor

Stellar Black



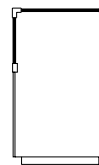


### Matrix

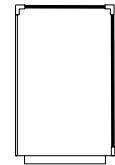
Squared shaped cars with different arrangements of the glass walls.

Models M100, M200, M300: Framed glass.

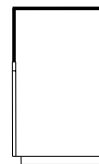
Models M100d, M200d, M300d: Frameless glass.



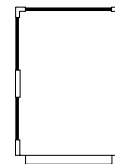
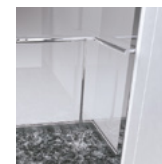
M100



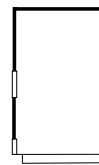
M300



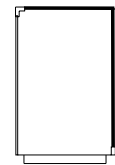
M100d



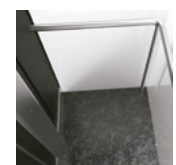
M200



M200d



M300d



We have a multitude of shapes for panoramic cars with one or more glass walls.

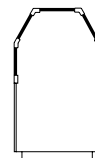


### Vector

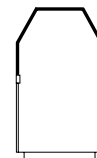
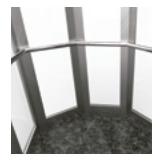
Polygonal or curved cars, with or without joints between glass panels.

Models V100, V300: Framed glass

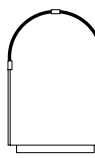
Models M100d, M300d: Frameless glass



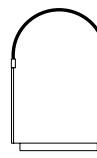
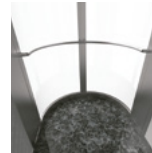
V100



V100d



V300



V300d



For model & load compatibility, please ask for advice.

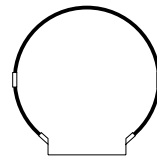


## Century

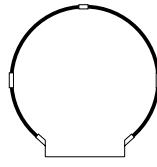
Completely Curved glazed cars.

Models C100: Framed glasses.

Models C200: Frameless glasses.



C100



C200





### Walls

#### Skinplates



White



Simil stainless steel



Stainless Steel



Grey



Cream

#### Painted Sheet



White RAL 9016



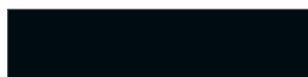
Beige RAL 1019



Pearl Light Grey RAL 9022\*



Metallic grey RAL 9006



Black RAL 9005

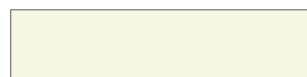


Blue RAL 5005

\* Tariff Type 2

#### Back painted glass (under request)

##### Matte (Tariff Type 3)



Oyster white RAL 1013



White RAL 9003\*



Metallic grey RAL 9006



Black Starlight RAL 0337\*



Bronze



Light Brown RAL 1236



Aluminium RAL 9007

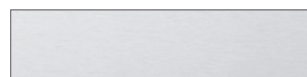


Green RAL 8615

\*Pistachio green (hand painted, under request)

\*Tariff Type 2

#### Stainless Steel



Brushed



Checks



Canvas



Leather



Linen



Polished

Available any other finish from:





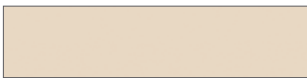
**Laminated (in stock)**



F2274 White France



F2273 Seringa



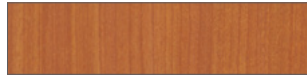
F2833 Sandstone



F8841 White Ash



F0190 Finn Beech



F1139 Cherry Tree



F1062 Smoked Oak



F6307 Burnt Strand\*

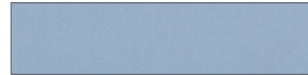


F7927 Folkestone



F8830 Elemental Concrete

**Laminated (under request)**



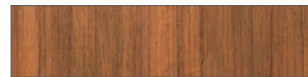
F7884 Blue



F2478 Bermuda



F1997 Ocean



F8849 Natural Teak



F8848 Black Legno



F7837 Graphite



F8833 Elemental Graphite



F8832 Elemental Corten



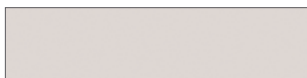
F3091 Crystal White

\*Tariff typo 3

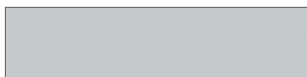
\* Other formicas available at <https://www.formica.com/es-es>

Colors shown may vary from the actual color depending on the computer monitor settings or the printing conditions.

**Melamine**



Cream



Grey



Chocolat



Blue



Cervine Pine



Beech



Cherry tree



Habana Linen



Dark Oak

Not in compliance with the standard EN 81.20



# Floors

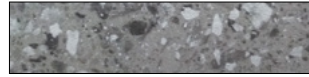
## Anti-slip rubber 4,5 Kg / m<sup>2</sup>



Beige



Oak



Grey granite



Blue



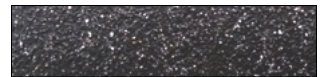
Sand



Grey



Grey concrete



Black

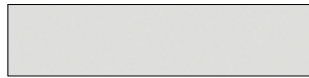
## Artificial Stone 49 kg / m<sup>2</sup>

### Tariff Type 1



Grey Expo

### Tariff Type 2



White North



Concrete Spa



Black Starlight



Royal Reef

### Tariff Type 3



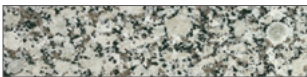
Merope

## Natural granite 56 kg / m<sup>2</sup>

### Tariff Type 1



Pink Porriño



Grey Perla

### Tariff Type 2

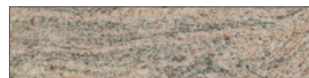


White Crystal

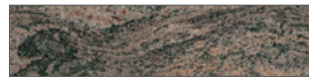


Grey Quintana

### Tariff Type 3



Sahara Winds



Reliquia



Black South Africa



Intense Black

### Tariff Type 4



Dark Blue Labrador



Andromeda

## Metallic floor



Aluminum checkerboard  
6 Kg/m<sup>2</sup>



Stainless steel 12 Kg/m<sup>2</sup>

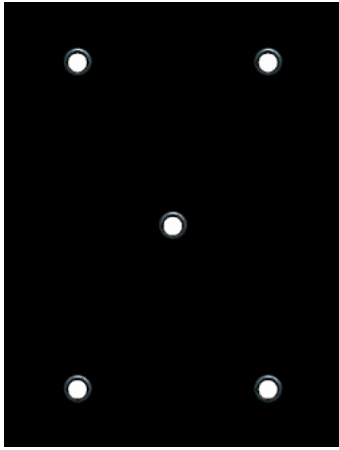


Steel durbar plate 36 Kg/m<sup>2</sup>

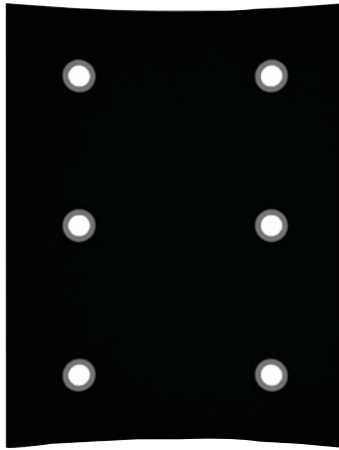




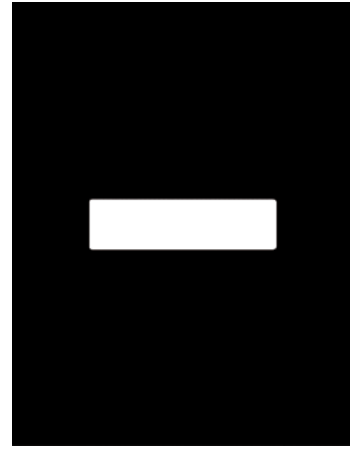
## Ceilings



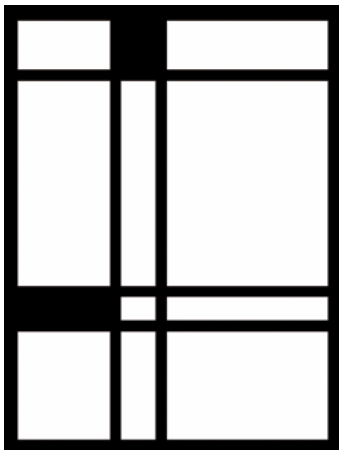
LED spots



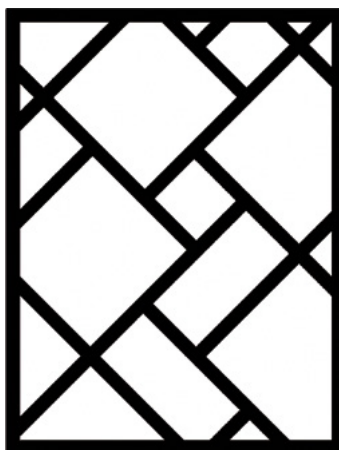
Curved LED spots



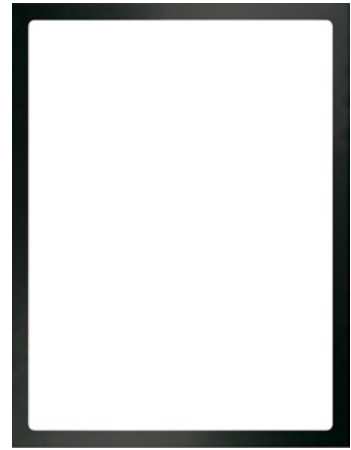
LED Strip



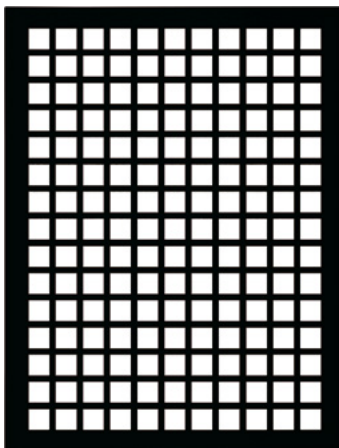
Mondrian



Arte



Marco



Mosaic



Tinted glass



All ceilings can be selected in white, black and stainless steel finishes.



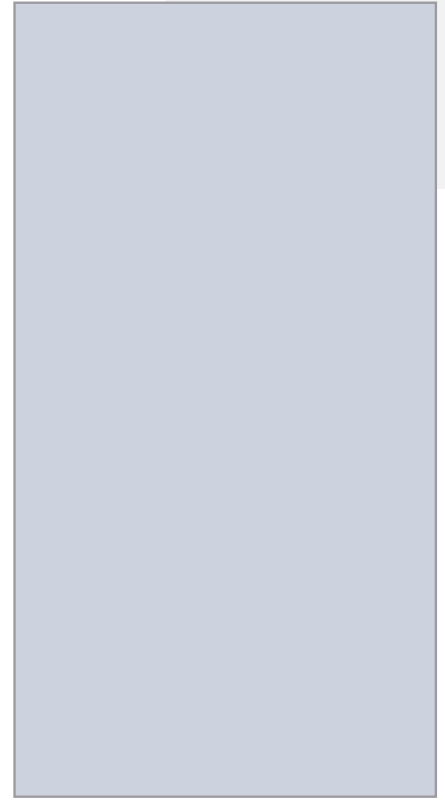
## Mirror



1/2 Height



Slat mirror



Full mirror

## Handrail

STANDARD EN 81-20



1



2



3



4



5



6

- 1. Rectangular stainless steel
- 2. Rectangular skinplate
- 3. Straight tubular polished St. Steel
- 4. Curved tubular satin St. Steel
- 5. Curved tubular polished St. Steel
- 6. Curved tubular painted black

**Automatic door**



Primed  
Stainless steel



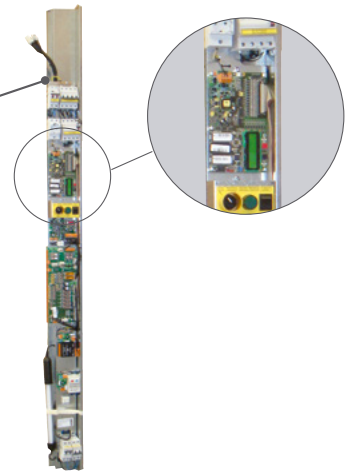
Big vision panel



Folding Bus door big vision panel



Full glass stainless steel frame



▶ Control panel in door frame.

Available for Carlos Silva,  
Elec Megom, Sprinte and  
New Lift.



## Semi-automatic doors

---



Standard Vision panel

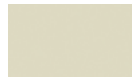


Big vision panel

Door finishes

► Embossed Epoxy

STANDARD

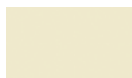


RAL 7032

OTHERS



RAL 9016



RAL 1015



RAL 9006



RAL 7004



RAL 1018



RAL 1019



RAL 6021



RAL 1034



RAL 3020



RAL 5012



RAL 8023



RAL 7010



RAL 7012



RAL 3004



RAL 6005



RAL 5011



RAL 9005

► Smooth Stainless steel

STANDARD



AISI 441 2B/BA



AISI 304 2B



AISI 316 2B



AISI 441 2B



AISI 304 2B



AISI 304 2B



AISI 316 2B



AISI 316 4N

DECORATIVE



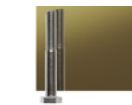
AISI 304 BA



AISI 304 BA



AISI 316 BA



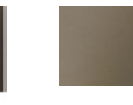
AISI 304 BA



AISI 304 BA



AISI 304 BA



AISI 304 BA

► Patterned Stainless steel



AISI 441 BA<sup>(1)</sup>



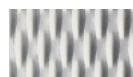
AISI 304 BA



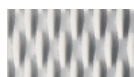
AISI 304 BA



AISI 316 BA<sup>(1)</sup>



AISI 441 BA<sup>(1)</sup>



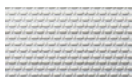
ISI 304 BA



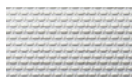
AISI 304 BA



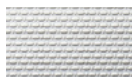
AISI 304 BA



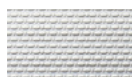
AISI 441 BA<sup>(1)</sup>



AISI 304 BA



AISI 304 BA



AISI 316 BA<sup>(1)</sup>

Available any other finish from:



# 5. Operating panels & Indicators

## Car Operating panels



Epsilon

Glass panel



### Handrail Type (EN81.70)



## Landing operating panels



With engraving on steel plate



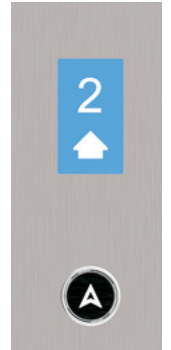
With transparent window plate



Surface mounted



Surface mounted



With Display

## Push buttons



Bas 120



Bas 120 Black



RT42



US91-EN



US95-EN



AT33RM



US90 Jumbo



US95 Jumbo



B3 (Arkel)



B3 Black (Arkel)



V2-P (Arkel)

## Indicators



SURFACE mounted



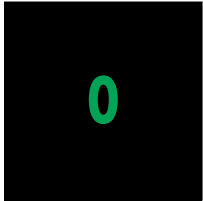
DIRECTIONAL ARROWS



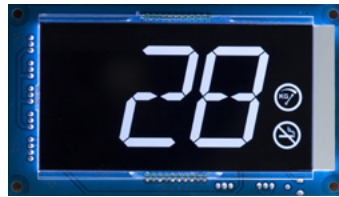
RETRO

# 5. Operating panels & Indicators

## Displays



TFT 2,8"  
CARLOS SILVA



LCD10555  
ARKEL



TFT 2385  
LESTER



LCDA  
ARKEL



EAZ-TFT-45 2,8"  
NEWLIFT



TFT 5,6"  
CARLOS SILVA



TFT 4,3" Clearview  
DIGITAL ADVANCE



LIFTMEDIA  
ARKEL



TFT 2381  
LESTER



EAZ-TFT-110 5"  
EAZ-TFT-210 10,3"  
NEWLIFT



7"  
CARLOS SILVA



10"  
CARLOS SILVA





Your Partner  
**In Lift Solutions.**



## 6. Structures

The structures for Passenger Lift and Home Lift give us flexibility, by eliminating architectural barriers and bringing solutions for the total accessibility.

### STRUCTURES

#### ► Colors



RAL 9002



RAL 3004



RAL 1015



RAL 6005



RAL 7032



RAL 5003



RAL 7001



RAL 9005



RAL 8003



OXIRON

## Advantages

The assembly time is reduced by over 60% compared to an installation with traditional construction system, with a clean, fast, and quiet product.

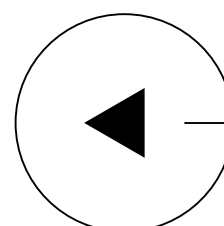
Absolutely respectful with the environment, both in the assembly process and industrial development.

Ease of assembly, makes this product highly simple to operate complying with the higher safety standards.



## Characteristics

Multi-purpose technical solution for every building, they can be adapted to the different constructive requirements. TC series are designed to be integrated in the existing building and its environment.





Ceiling (metal sheet or glass)



Roof over door (metal sheet or glass)



Handrail



Ventilation



# Types of enclosure



Transparent glass



Frosted glass



Total glass



Blind sheet



Mesh sheet

RALOE



Your expert and  
**trustworthy partner**



